

Augsburg ATIS 124.57	Augsburg TOWER 124.97	München ARRIVAL 123.90	München RADAR 124.05 132.55
-------------------------	--------------------------	---------------------------	-----------------------------------

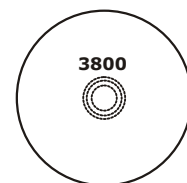
Apt Elev: 1515'

Trans level: By ATC

Trans alt: 5000'

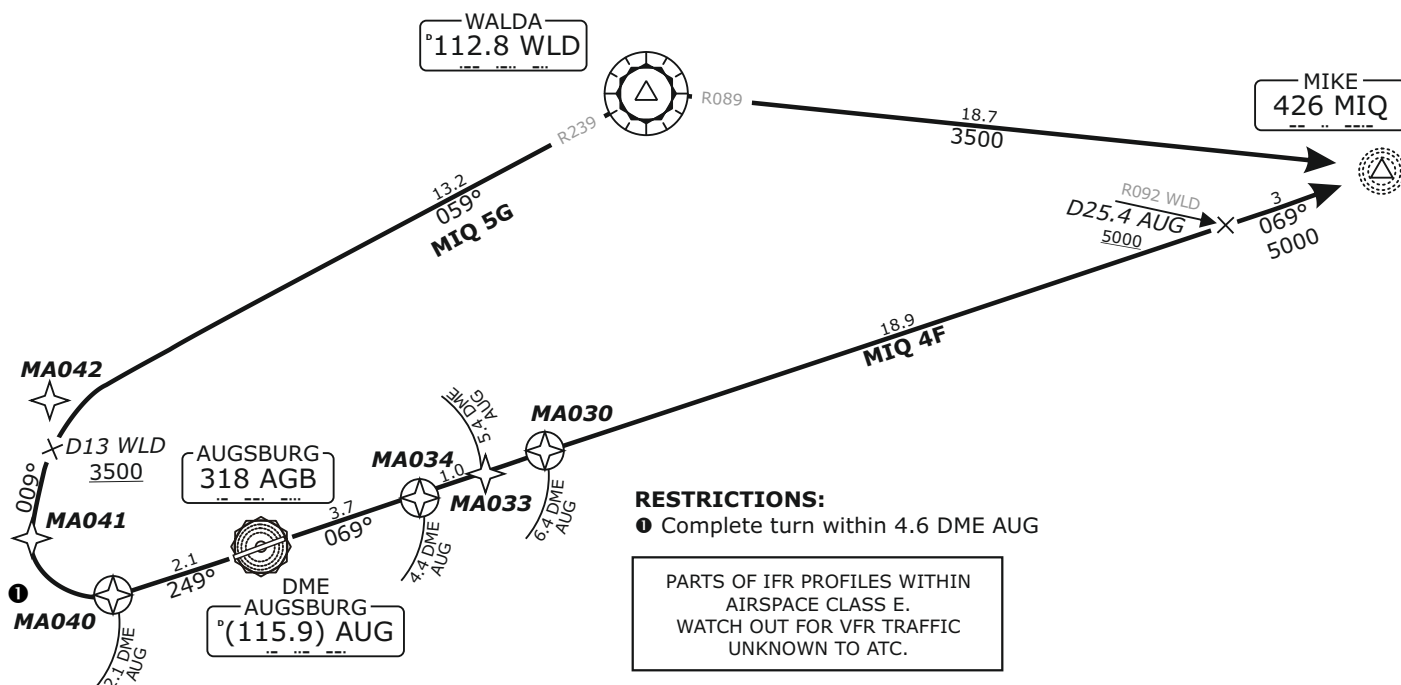
**MIQ 5G** - MIKE FIVE GOLF  
**MIQ 4F** - MIKE FOUR FOXTROTT

NOT TO SCALE



MSA 25 NM from AGB NDB

Do not use for real life navigation!



**REMARKS:**

NAVAID addition for real frequencies available on <http://www.vacc-sag.org/airport/EDDM> if not installed use old frequencies:  
MAH - 108.4 / MIQ - 426.5 / KPT - 109.6

Pilots of GPS/FMS-RNAV-equipped aircraft shall, if possible, use the supplementary GPS/FMS RNAV procedures which are described following the text "GPS / FMS RNAV:" and charted. The ground-based navigation aids required for the use of the respective conventional flight procedure and the associated aircraft equipment shall remain in operation at all times

**Remain on Tower frequency, when advised by ATC contact München Arrival or Radar.**

**Initial climb clearance ALT 4000' MIQ5G**  
**Initial climb clearance ALT 5000' MIQ4F**

SID	RWY	ROUTING	GPS/FMS RNAV
<b>MIQ 5G</b>	<b>25</b>	On RWY track to 2.1 DME AUG; RT, on heading 008° to intercept R239 WLD; on R239 WLD to WLD; on R089 WLD / course 089° MIQ to MIQ	MA040[A2000+; R] - MA041 - MA042[A3500+; R] - WLD[R] - MIQ.
<b>MIQ 4F</b>	<b>07</b>	On RWY track to 5.4 DME AUG; on course 069° AGB / 069° MIQ to 25.4 DME AUG / crossing R092 WLD; on course 069° MIQ to MIQ	[A2000+] - MA033 - MA039[A5000+] - MIQ.