

| | | | | |
|-------------------------|--------------------------|---------------------------|-------------------------|--------|
| Augsburg ATIS 124.57 | Augsburg TOWER 124.97 | München ARRIVAL 123.90 | München RADAR 124.05 | 132.55 |
|-------------------------|--------------------------|---------------------------|-------------------------|--------|

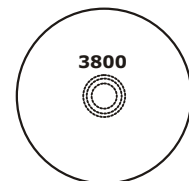
Apt Elev: 1515'

Trans level: By ATC

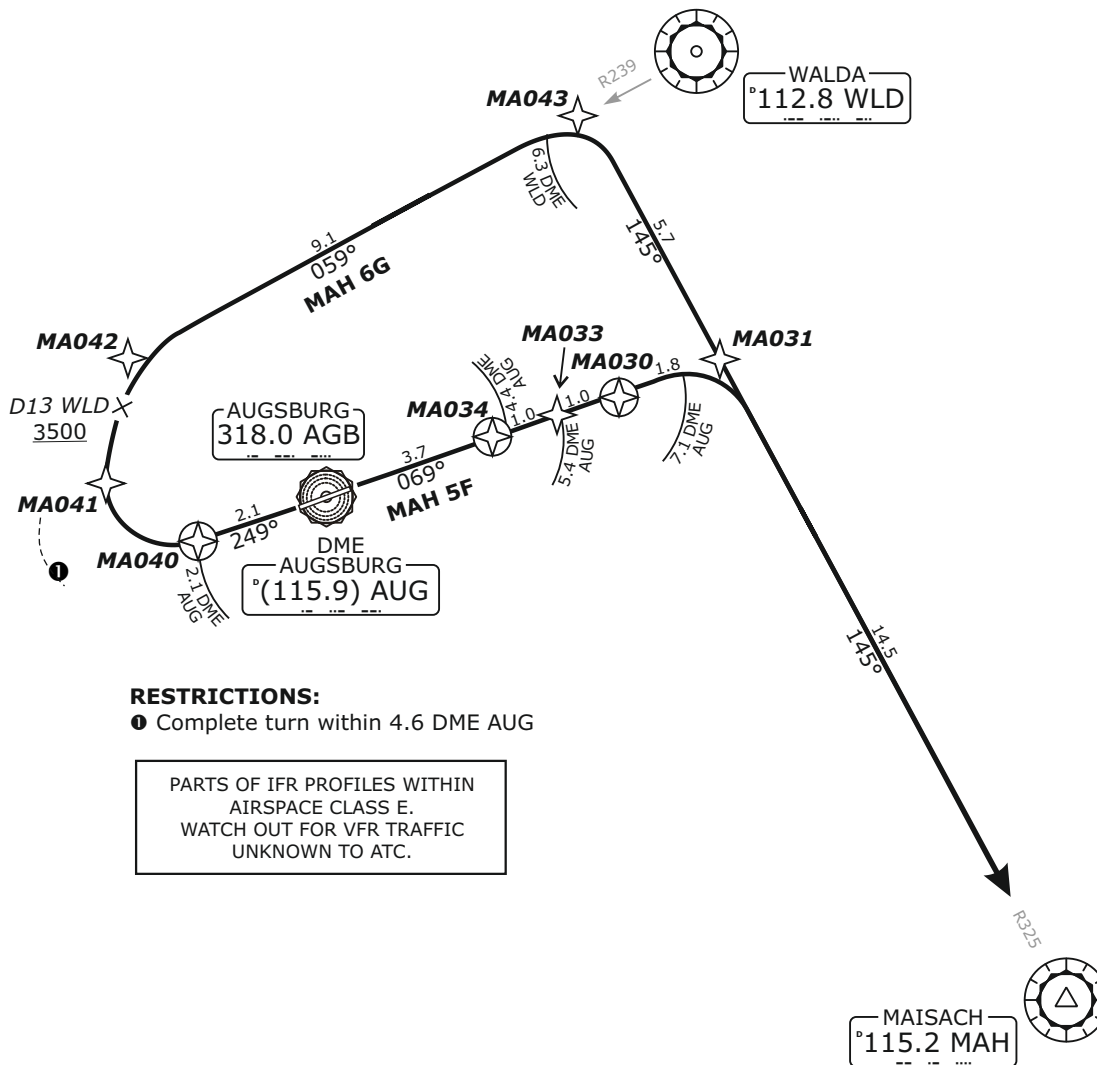
Trans alt: 5000'

MAH 6G - MAISACH SIX GOLF
MAH 5F - MAISACH FIVE FOXTROTT

NOT TO SCALE



MSA 25 NM from AGB NDB



RESTRICTIONS:

- Complete turn within 4.6 DME AUG

PARTS OF IFR PROFILES WITHIN AIRSPACE CLASS E. WATCH OUT FOR VFR TRAFFIC UNKNOWN TO ATC.

REMARKS:

NAVAID addition for real frequencies available on <http://www.vacc-sag.org/airport/EDDM> if not installed use old frequencies:
MAH - 108.4 / MIQ - 426.5 / KPT - 109.6

Pilots of GPS/FMS-RNAV-equipped aircraft shall, if possible, use the supplementary GPS/FMS RNAV procedures which are described following the text "GPS / FMS RNAV:" and charted. The ground-based navigation aids required for the use of the respective conventional flight procedure and the associated aircraft equipment shall remain in operation at all times

Remain on Tower frequency, when advised by ATC contact München Arrival or Radar.

Initial climb clearance ALT 4000'

| SID | RWY | ROUTING | GPS/FMS RNAV |
|---------------|-----------|---|---|
| MAH 6G | 25 | On RWY track to 2.1 DME AUG; RT, on heading 008° to intercept R239 WLD; on R239 WLD to 6.3 DME WLD; RT, on R325 MAH to MAH. Complete Turn within 4.6 DME AUG. Max IAS 200 KT until established on heading 008°. | MA040[A2000+; R] - MA041 - MA042[A3500+; R] - MA043[R] - MAH. |
| MAH 5F | 07 | On RWY track to 7.1 DME AUG; RT, on R324 MAH to MAH. Climb with 5.4 % (330 ft/NM) until passing 2000. Max IAS 200 KT until established inbound MAH. | [A2000+] - MA031[R;K200-] - MAH |

Do not use for real life navigation!

Revision: 2018-10-11 - Change: Procedure, variation