

München RADAR EDDM_N_APP 123.90	München RADAR EDDM_S_APP 127.95	München RADAR EDDM_1_APP 128.02	München RADAR EDDM_2_APP 120.77	München RADAR EDMM_CTR 124.05	München RADAR EDMM_R_CTR 132.55	München RADAR EDMM_K_CTR 134.15
Apt Elev: 1487'		Trans level: By ATC		Trans alt: 5000'		

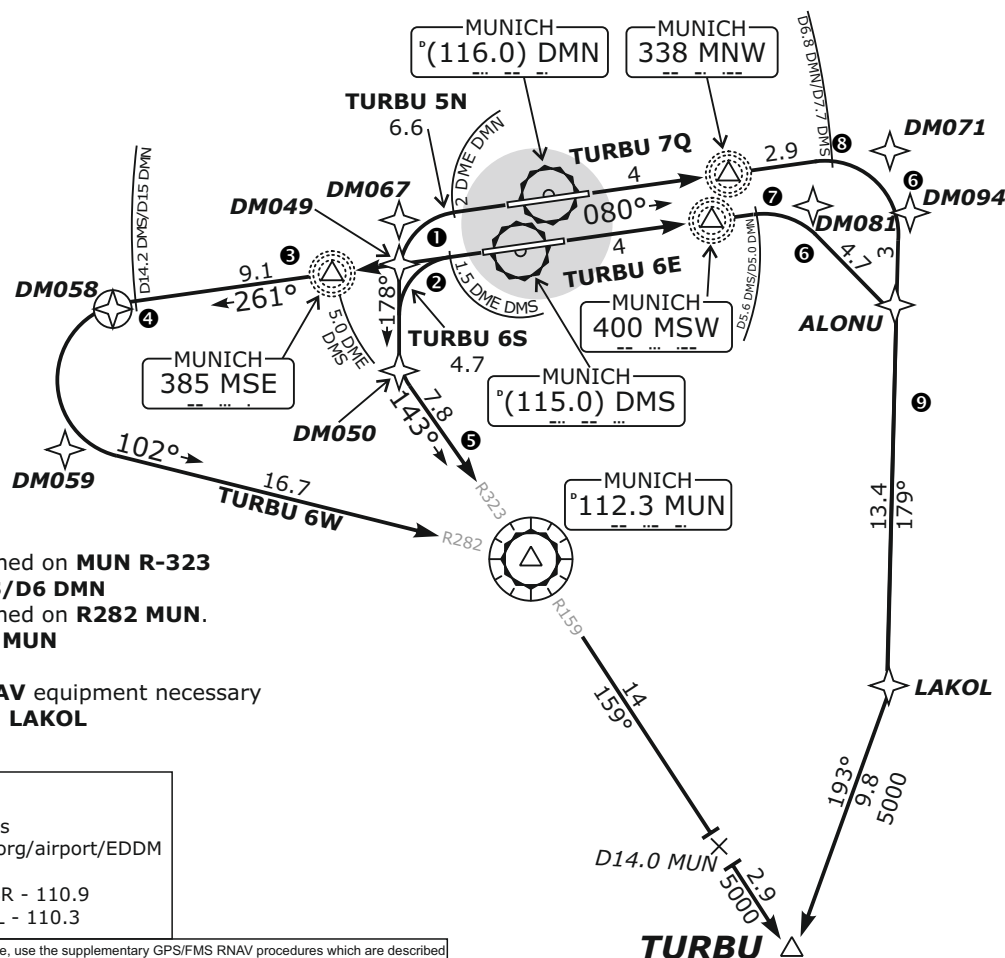
TURBU 6E - TURBU SIX ECHO
TURBU 5N - TURBU FIVE NOVEMBER
TURBU 7Q - TURBU SEVEN QUEBEC
TURBU 6S - TURBU SIX SIERRA
TURBU 6W - TURBU SIX WHISKEY

AVAILABLE FOR JET AIRCRAFT ONLY

NOT TO SCALE

3700'

MSA 25NM MNW



RESTRICTIONS:

- 1 MAX 210 KT during turn
- 2 MAX 210 KT until established on MUN R-323
- 3 MAX 220 KT until D5 DMS/D6 DMN
- 4 MAX 250 KT until established on R282 MUN.
- 5 MAX 250 KT until passing MUN
- 6 MAX 230 KT during turn
- 7 After passing 3700 BRNAV equipment necessary
- 8 MAX 250 KT until crossing LAKOL

REMARKS:

NAVAID addition for real frequencies
available on <http://www.vacc-sag.org/airport/EDDM>
if not installed use old frequencies:
MAH - 108.4 / DMS - 108.6 / ILS08R - 110.9
MIQ - 426.5 / MSE - 385.0 / ILS08L - 110.3

Pilots of GPS/FMS-RNAV-equipped aircraft shall, if possible, use the supplementary GPS/FMS RNAV procedures which are described following the text "GPS / FMS RNAV:" and charted. The ground-based navigation aids required for the use of the respective conventional flight procedure and the associated aircraft equipment shall remain in operation at all times

Contact München Radar when advised by Tower.

Initial climb clearance FL70

SID	RWY	ROUTING	GPS/FMS RNAV
TURBU 6E	08R	Climb on course 080° MSW (course 080° MSE) to D5.6 DMS (D5 DMN); RT, on track 139° to ALONU; RT, on track 179° to LAKOL; RT, on track 193° to TURBU. Climb with 3.8% (235 ft/NM) until passing 3700.	[A1900+] - DM081[R] - ALONU[K230-; R] - LAKOL[K250-; R] - TURBU.
TURBU 5N	26R	Climb on course 261° MNE (course 261° MNW) to D2 DMN or 1900, whichever is later; LT, on heading 178° to intercept R323 MUN, on R323 MUN to MUN; RT, on R159 MUN to TURBU. Climb with 5.5% (335 ft/NM) or more until passing 4200.	DM067[K210-; L] - [A1900+] - DM050[L] - MUN[K250-; R] - TURBU.
TURBU 7Q	08L	Climb on course 080° MNW (course 080° MNE) to D6.8 DMN (D7.7 DMS); RT, on track 179° to LAKOL; RT, on track 193° to TURBU. Climb with 3.4% (210 ft/NM) until passing 3700.	[A1900+] - DM071[R] - DM094[K230-; R] - LAKOL[K250-; R] - TURBU.
TURBU 6S If unable to comply request TURBU 6W	26L	Climb on course 261° MSE (course 261° MSW) to D1.5 DMS; or 1900, whichever is later; LT, on heading 178° to intercept R323 MUN; on R323 MUN to MUN; RT, on R159 MUN to TURBU. Climb with 6.8% (415 ft/NM) or more until passing 4200.	[A1900+] - DM049[L] - DM050 [K210-; L] - MUN[K250-; R] - TURBU.
TURBU 6W		Climb on course 261° MSE (course 261° MSW) to D14.2 DMS (D15 DMN); LT, on R282 MUN to MUN; RT, on R159 MUN to TURBU.	[A1900+] - MSE[K220-] - DM058[L] - DM059[K250-] - MUN[R] - TURBU.